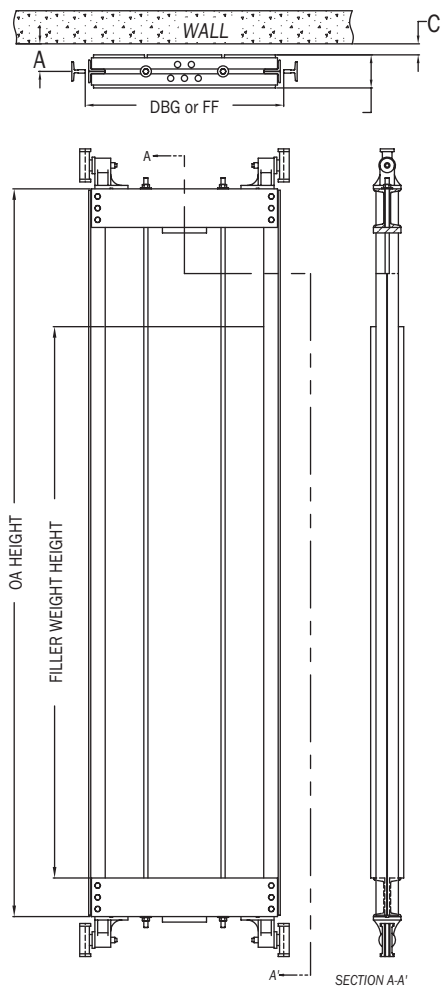


Titan Machine manufactures counterweight frames for most low and midrise applications using structural steel components. Each frame assembly is available in "T" or "C" construction to best suit your application. Includes hitch plate, (2) tie rods, buffer plate and drilled holes for mounting guide shoes.



*Filler weights and filler weight drawings are available from Titan by filling out this easy guide.

Contact our customer service department for special applications as we will build to suit your needs.

A=	
D.B.G.F.F.=	
C=	
D=	
GUIDE SHOES=	
RAIL SIZE=	
OVERALL LENGTH=	