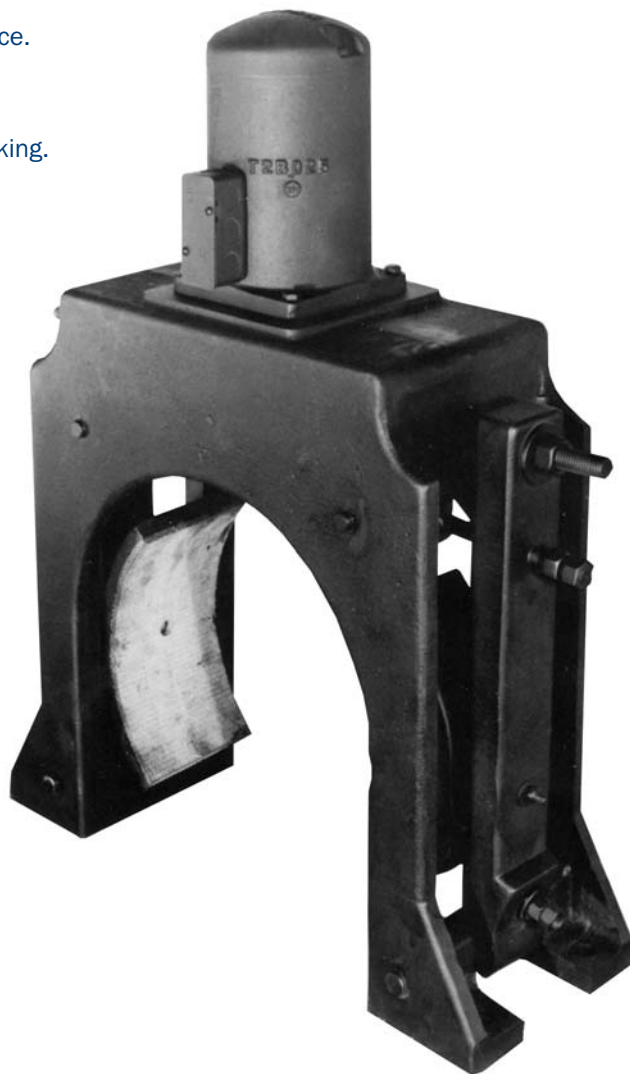


► **FEATURES**

- Inexpensive ,efficient design with large mechanical advantage, works smoother, energy efficient.
- Vertical plunger design for easier adjustment and service. Preferred by maintenance professionals.
- Enclosed D.C. coil for trouble-free service.
- Ball & socket design brake shoes for smooth, even braking.
- Toe & heal adjustments.
- Drop in installation, no need to disassemble or split.
- Non asbestos brake linings are bonded by heat cured adhesive for longer life and easy relinings.



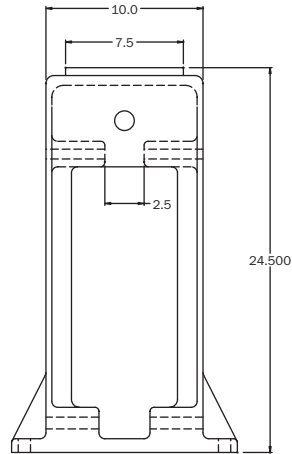
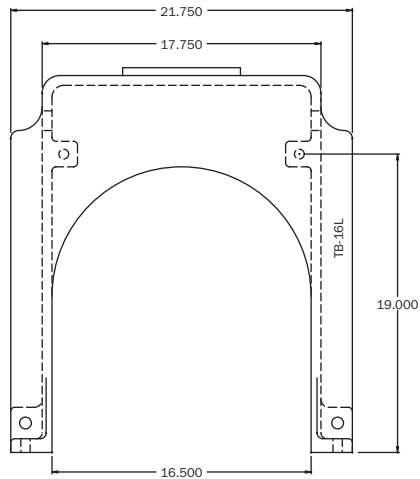
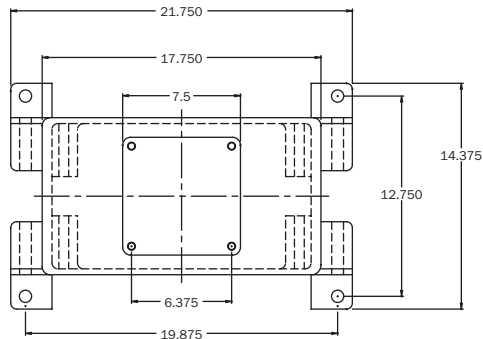
ELECTRICAL SPECIFICATIONS

BRAKE SIZE	TB-10 to TB-14		TB-16 to TB-20	
VOLTS	110V	220V	110V	220V
OHMS	68	280	59.5	168
AMPS	1.62	.78	1.94	1.18
WATTS	178	173	224	260

TITAN BRAKE DIMENSIONS

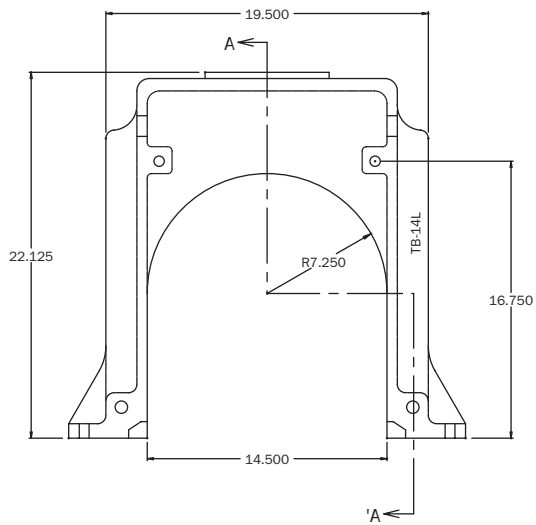
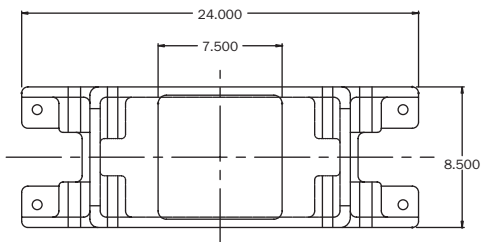
PART #	MOUNTING TYPE	A	B	C	D	E	F	G	H	I	J	K	L
TB-14L	B	7 3/8	25 3/4	33 1/8	14	23 7/8	5 3/16	2 19/32	13	8 13/16	17 5/8	5 1/2	14 7/16
TB-14H	B	11 3/8	25 3/4	37 1/8	14	23 7/8	5 3/16	2 19/32	13	8 13/16	17 5/8	5 1/2	14 7/16
TB-16L	A	9	26 3/16	35 1/16	16	21 3/4	12 3/4	6 3/8	14 1/8	9 15/16	19 7/8	6	16 1/2
TB-16H	A	13	26 3/16	39 3/16	16	21 3/4	12 3/4	6 3/8	14 1/8	9 15/16	19 7/8	6	16 1/2
TB-18L	A	10 1/2	30 5/8	41 1/8	18	26 1/2	14 7/8	7 7/16	16 7/8	12 3/8	24 3/4	7	20 1/2
TB-20L	A	10 1/2	30 5/8	41 1/8	20	26 1/2	14 7/8	7 7/16	16 7/8	12 3/8	24 3/4	7	20 1/2

BRAKE HOUSING 14-TITAN 2

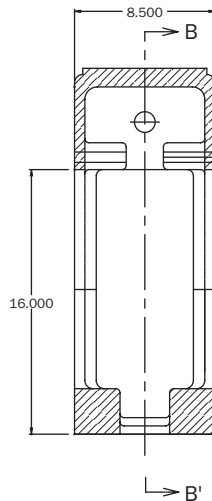


DC BRAKES | BRAKE COUPLINGS

BRAKE HOUSING 16-TITAN 2



VIEW A-A'



VIEW B-B'

